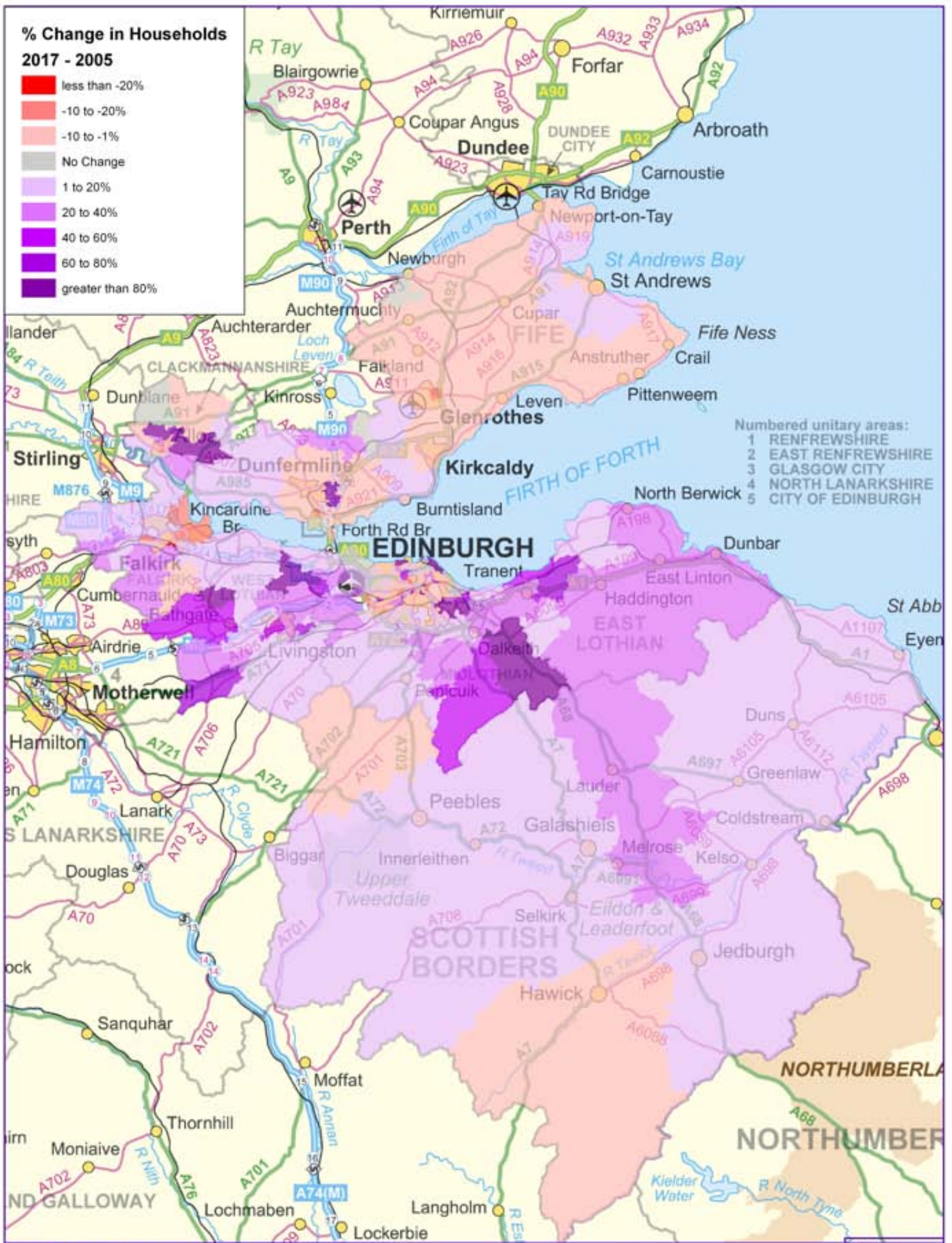


**% Change in Households
2017 - 2005**



- Numbered unitary areas:
- 1 RENFREWSHIRE
 - 2 EAST RENFREWSHIRE
 - 3 GLASGOW CITY
 - 4 NORTH LANARKSHIRE
 - 5 CITY OF EDINBURGH

Office: Edinburgh Drawn: LTB Date: 120808 Path: D:\Accession\ACCESS\pm\PlanningData\MAPS

TMfS05A Planning Data

Title
Planning Data: SESTRAN
Households Changes

Scale
1:695,422
at A3

Project No. C3491808/00 Figure Figure

Ordnance Survey © Crown copyright and/or database right. All rights reserved. License number 10013712



Prepared for MVA
August 2008